



# Picture Framers GUILD

September, 1997

## In This Issue

- EPFG online! . . . . . 3
  - Text of press release
  - Advertising opportunities
- EPFG's letter to PPFA . 5
- Computer tip of the month . . . . . 6
- The Library . . . . . 7
- Classified ads . . . . . 7
- Cascade Picture Framers' Guild Pacific Northwest Trade Show '97 . . . . . 7
- September meeting topic 9
- EPFG Officers and Board of Directors . . . . . 9
- Calendar of upcoming events . . . . . 10

## EPFG to Separate from National PPFA

It's official; by a narrow margin in the recent vote, the members of EPFG voted to withdraw from PPFA national and "go our own way" with a separate organization, structured much like the current one, but devoted to regional and local issues and concerns.

More information will be forthcoming to members concerning election of officers, revision of bylaws, dues, etc. In the meantime, your current officers will continue to serve, and monthly programs and newsletter publication will remain as in the past. We are confident that this change will result in a better, stronger organization of individuals and shops dedicated to quality picture framing in the Pacific Northwest.

Please see page five to read the letter, signed by the EPFG President Frank Larson, notifying PPFA of this action.

### The Ballots Have Been Counted ... What's Next?

EPFG has voted to no longer be a chapter of the national PPFA organization, and to form our own professional organization in the Pacific Northwest region. You remain a member of this organization of picture framers, artists, art galleries, and suppliers if you paid dues either to PPFA or to EPFG. In the following paragraphs, you will learn how EPFG will continue without the PPFA affiliation.

Many of you paid dues to PPFA. A portion of those dues was to be sent to the local chapter; with the financial difficulties of PPFA recently, this has not happened. When we withdrew from PPFA, these dues of \$750.00 for 1997 were "returned" to the national organization. Fortunately, even with the loss of these dues, EPFG remains in sound financial condition, and we will continue to provide membership services to PPFA members for the remainder of this year.

EPFG will remain a strong framing guild. With the strength of our membership and the creative talents of the EPFG board of directors, EPFG will now transition into a new era. 1998 will bring a new outlook for EPFG, with a new board of directors and a new organization without a national affiliation. This is an opportunity that we all should look forward to.

Your continued support and encouragement is important to the success of the new EPFG. With the EPFG elections coming up in November, consider getting involved. Contact any of the EPFG board of directors to inform them of the talents you can contribute to the Guild.

### What's Happening

- EPFG Web Site goes online September 1st. ([www.myframeshop.com/epfg](http://www.myframeshop.com/epfg))
- September 9th EPFG meeting 7:30 p.m. at Hartung Glass, with speaker Joanne Sterns - Fine Art Appraising.
- Cascade Picture Framers Guild Trade Show takes place at the Jansen Beach Double Tree Hotel, September 21, 1997, in Portland, Oregon.
- EPFG elections will be held in November with the board changing in January.



*Fabrics - Moulding - Gold Leaf  
For the Professional Picture Framing Industry*

---

# DENIM

---

*Finally, a Denim fabric that has all the properties we need:*

*The Look of Denim*

*The Feel of Denim*

*Excellent Workability*

*Priced Right*

*Ongoing Availability*

*All the Best Colors*

*Ideal for Art with a Western theme. Perfect for children's rooms. Great with childhood photographs and whimsical pieces. Our new DENIM pattern is 54" wide and comes in six colors. Made of 100% cotton, it's priced at an easily affordable \$12.95 per yard.*

*Our Hand-Wrapped Corner Samples are carefully crafted to help you show your clients just how beautiful DENIM can be. For your free set of corners, simply contact our Customer Service Department.*

*We also invite you to call us if you have any questions or comments regarding our DENIM pattern, or if you need any information about Fabric and its use in Custom Picture Framing. Dial 1-800-832-2742. Ask for Frank. Thanks!*

---

6001 Santa Monica Blvd., Los Angeles, CA 90038  
World Wide Web: <http://www.FramingFabrics.com> • E-mail: [ffmi@n-n-n.com](mailto:ffmi@n-n-n.com) • Fax: (213) 469-0940

July, 1997

## EPFG Goes Online!

EPFG now has a Web site. The EPFG board of directors decided to create an EPFG presence on the Web in an effort to grow the services that EPFG offers to its members. The EPFG Web site consists of two individual sites; one for consumers and another "members only" Web site.

The consumer site, <http://www.myframeshop.com/epfg>, gives the public access to picture framing information and lists the EPFG member frame shop closest to them. Consumers can find our web page through Internet search services, a link from the myframeshop.com Network Web site, or through each member's advertising of our Web site.

The "members only" Web site, <http://www.myframeshop.com/epfg/homepage.htm>, was created for you. You can find meeting information, the latest newsletter, classified ads, and a member listing on the site. Members are encouraged to visit the site monthly to keep up with the activities of the Evergreen Picture Framers Guild.

Being listed on the EPFG Web site is free to all members. If you are not currently a member of EPFG you may want to consider joining today so you can take advantage of the new medium of advertising. To join, send your EPFG membership dues of \$40 to: EPFG; c/o Paul Knoop, CPF, Treasurer; 6724 W. 19th Street; University Place, WA 98466-5527.

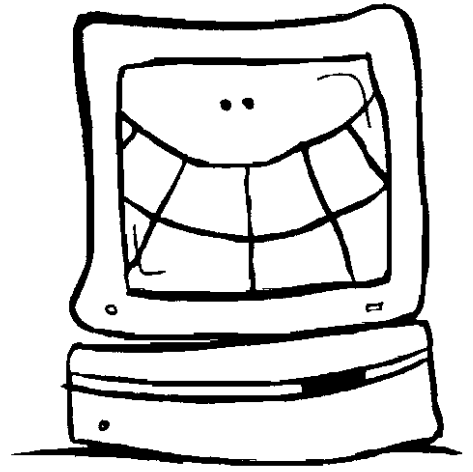
EPFG publicized the new site by sending a press release to *Art Business News*, *Picture Framing Magazine*, and *Decor*. Look for articles in these magazines in the months to come talking about our Web site.

### Press Release

**September 1, 1997**— Finding quality picture frame shops in Alaska and Washington became much easier today with the introduction of the Evergreen Picture Framers Guild Web Site. The EPFG Web site is made up of two sites; a consumer site and a membership site.

The consumer site is designed to help educate consumers about picture framing and to help them locate a member frame shop nearest to them. The membership site is a source of information for all EPFG members. The site includes a membership directory and monthly newsletter.

Visit the Evergreen Picture Framers Guild consumer web site at <http://www.myframeshop.com/epfg> or the "members only" web site at <http://www.myframeshop.com/epfg/homepage.htm>.



### Web Site Advertising Opportunities

Hey newsletter advertisers! You have a free advertisement located on our new "members only" web site ([www.myframeshop.com/epfg/homepage.htm](http://www.myframeshop.com/epfg/homepage.htm)). A temporary ad has been made for you; however you can change it if you like. You have two options if you want to change your ad:

- Contact Tim Taricco to discuss a new design. Design charges may apply. 425-827-6951
- Send us your own GIF or animated GIF file. Ad size 135h x 126w pixels. Send your new ad on a PC 3 1/2" disk to: Tim Taricco, 10640 NE 29th St. Suite 70, Bellevue, WA 98004. Don't forget, your advertisement can be linked to your Web site.

Does your Frame Shop have a Web site? If so, you can advertise it on the EPFG consumer Web site. See our Web site for details, <http://www.myframeshop.com/epfg> or contact Tim Taricco 425-827-6951.



**TRU VUE ARTBOARDS**  
 Any Color. Any Core. Any Size.  
 Creativity without Compromise.

Every Tru Vue Artboard is available in both a white and black core option in sizes 32" x 40" and 40" x 60" allowing you to design by color, not board availability. To receive your free Artboard Specifier, please call the Tru Vue Framer's Helpline at  
**1.800.282.8788**



**STUDIO MOULDING**  
 ORDER: (800) 262-4174  
 FAX: (206) 656-9125  
 LOCAL: (206) 656-2940

8214-B SOUTH 192nd ST., KENT WA 98032

- 5 chops: 5% Discount + Free Freight
- 10 chops: 10% Discount + Free Freight
- Length: Quantity Discount Available
- Routing Service

**Joseph Huber**  
 Sales Representative



**VICTOR MOULDING CO.**  
 977 66TH AVENUE, P.O. BOX 2206  
 OAKLAND, CA 94621 • 415-430-0400

WHOLESALE PICTURE FRAME SUPPLIES

CHUCK BIGFORD  
SALES REPRESENTATIVE

(206) 481-2555

1-800-366-8428  
1-415-430-8588 FAX

MESSAGE CENTER  
1-800-359-2829  
EXT 3715



**THE WILLIAMSON CO.**  
 FINE MOULDINGS & FRAMES

**Extreme Value**

Manufacturer & Distributor  
 OF QUALITY PICTURE FRAME MOULDING  
 AND READY MADE FRAMES

For more information, call  
**Donna Gluyas**  
 Western Region Sales Manager  
 1-800-851-2467

# NATIONAL GLASS

17030 WOODINVILLE-REDMOND ROAD, WOODINVILLE, WA. 98072

**QUALITY PRODUCTS AND EXCELLENT SERVICE!** NATIONAL GLASS INVENTORIES THE LARGEST SELECTION OF PICTURE FRAMING GLASS IN THE PACIFIC NORTHWEST.



NATIONAL GLASS

TRU VUE AND SANDEL PREMIUM, REFLECTION CONTROL, SATINVIEW, CONSERVATION SERIES GLASS, IMAGE PERFECT, DENGLAS, AND CRYSTALVIEW.

ALSO AVAILABLE: **FOAM-X**, MIRROR AND ACRYLICS

**EVERYTHING YOU NEED AND FREE DELIVERY ARE ONLY A PHONE CALL AWAY!**

(206) 488-8126

1(800) 521-7061

FAX (206) 488-3712

## EPFG Letter to PPFA

Dear Ms Freeman,

This letter has been composed to officially advise you and the Executive Board of Directors of the Professional Picture Framers Association that on August 1st, 1997 the Board of Directors of the Evergreen Picture Framers' Guild has been authorized and directed by a vote of its membership to dissolve its standing as an active chapter of the Professional Picture Framers Association. The Evergreen Picture Framers' Guild will continue to function as a separate organization.

EPFG by-laws allow the EPFG Board of Directors to donate any assets at time of dissolution to any charitable cause. Since EPFG is not dissolving but simply disassociating itself from PPFA, an equitable solution had to be arrived at concerning the PPFA dues that have been received and those still owed to EPFG. During the past year EPFG received only one check in the amount of \$1028.00 for memberships starting or renewing during the last quarter of 1996. The EPFG Board of Directors decided to prorate those dues from January 1st to August 1st 1997 and refund the difference of \$257.00 to PPFA. Any funds still due to EPFG from PPFA for memberships starting or renewing after January 1997 are forgiven and no attempt shall be made to collect any such funds.

The Evergreen Picture Framers' Guild will continue to offer all our services to any PPFA member in the states of Washington and Alaska through the end of 1997 after which they must join EPFG to continue enjoying EPFG benefits. The EPFG Board of Directors does not wish any bad feelings between our two organizations and extends an offer to help you in any projects you may have in the Northwest area.

Sincerely Yours,  
Franklin Larson, CPF, EPFG President

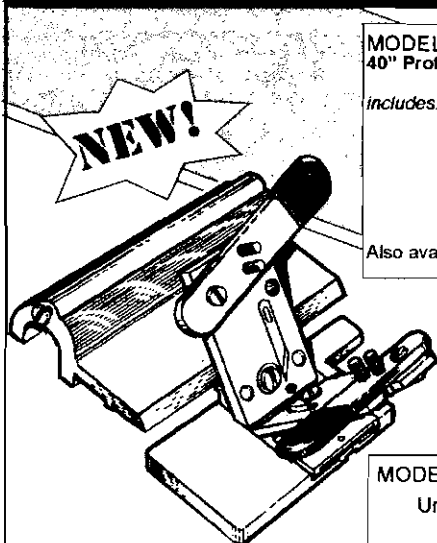
Archive Mattboard • Burnich & Designer Moulding • Clark Moulding  
Foamcore • Miller Mattboard • Piedmont Moulding  
TruVue Glass • Williamson Moulding

METAL FRAMES ART



6010 EAST ALKI WAREHOUSE #5 SPOKANE, WASHINGTON 99212  
PHONE 800 344-7329 509 535-3440 FAX 800 344-5003 509 535-3466

## Chances are you started out with a LOGAN Mat Cutter Have you seen what we've done lately?



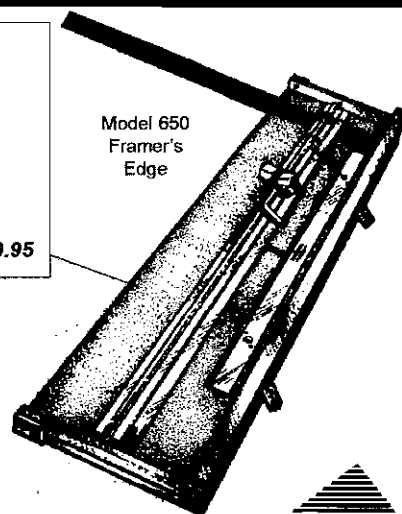
Model 705  
Logan  
V-Groover

### MODEL #650 *Framer's Edge* MAT CUTTER 40" Professional Production Matcutter

- includes:*
- Ergonomically designed Dual straight and Bevel cutting head
  - Production Stops
  - Parallel Mat Guide
  - Start and Stop Indicator for line to line cutting.
  - 27" Squaring Arm

**Suggested List Price \$599.95**

Also available in a 60" version MODEL #660 *Framer's Edge* \$799.95



Model 650  
Framer's  
Edge

### MODEL 705 LOGAN V-Groover patented

Unique "push-pull" surface V-Groover that cuts beautiful V-Grooves on the surface of the matboard. Works entirely with stops provided for accurate V-Grooving in seconds with zero overcuts. Endless creative possibilities!!

**Suggested List Price \$125.00**

### MODEL 706 Universal V-Groover patented

Works on professional mat cutters using a 5/8" thick cutting bar rod including Fletcher® and C&H® professional matcutters.

**Suggested List Price \$150.00**



GRAPHIC PRODUCTS, INC.  
1100 BROWN STREET • WALKONDA, ILLINOIS 60084  
NATIONWIDE TOLL FREE 1-800/331-6232  
TOLL FREE FAX 800/331-6329

See us at <http://www.artproducts.com>  
E-MAIL [Logan-Graphic-Products@worldnet.att.net](mailto:Logan-Graphic-Products@worldnet.att.net)

## EPFG Computer Tip of the Month

This is a new feature to the EPFG newsletter. Every month you will find a new tip to help make your life with computers a little easier. As computers become a part of all our lives, you will surely be excited each month to receive your EPFG newsletter and look for the "EPFG Computer Tip of the Month."

*This month's tip provided by  
Tim Taricco of myframeshop.com.*

### Searching the Internet

The Internet is growing in leaps and bounds. Nobody knows for sure how many sites are active on the Net. To find specific sites out of the many available, there are search services that attempt to keep track of the sites on the Net and categorize the sites for easy access. Yahoo is the first and most popular of the search services, also called search engines. But there are other search services you may want to try. Each is slightly different from the others, particularly in the way information is presented. You might want to try searching for "picture framing" on each of the following search services. This will give you a good idea of how the various services differ.

**Infoseek** provides a comprehensive index of Web sites, Usenet newsgroups, file transfer protocol (FTP) sites, and Gopher sites. This is a good search service for finding e-mail addresses, phone numbers, and regular addresses of businesses and individuals.

<http://www.infoseek.com>

**Lycos** provides a good index of Web sites.

<http://www.lycos.com>

**Excite** is a search service that claims to be better and faster at searching for keywords.

<http://www.excite.com>

**Alta Vista** provides a good index of Web sites.

<http://www.altavista.digital.com>

**Magellan** is a service, named for the famous explorer, that navigates the Net and gives reviews of sites.

<http://www.mckinley.com>

**Yahoo** provides a good index of Web sites.

<http://www.yahoo.com>

Software suite for Windows, DOS & OS/2

New Version! Galleries & Frame shops User Friendly!

FERENSOFT

# TRIO!

Art  
 Customers  
 Framing

Business management suite includes original **FRAMESHOP™** software. See why people are switching to **FERENSOFT!**  
Seattle 206-282-1775.  
Created by *Decor* columnist John Ferens, CPF.



## Colorful, Creative, Pure & Strong...




**Crescent Rag Mat**  
100% Cotton Museum Board

The choice of Artists & Picture Framing Professionals,  
for archival and conservation matting.  
Acid-free and lignin-free.

---

Send in your business card to receive  
your **FREE Rag Mat Booklet (RM-100)**.


Crescent Cardboard Company 100 W. Willow Road, Wheeling, IL 60090 U.S.A.



**Jeff Schuffman**  
Sales Representative

1433 W. Frankford Rd. #100 Carrollton, Texas 75007  
972-466-0721 • 972-466-3662 Fax  
800-527-0421 • 800-817-0524 Fax  
Ext. 882

SEATTLE, WA 98133



**THE ART DOCTOR**  
Restoration of Oil Paintings, Japanese Screens,  
Art on Paper, Art Objects

**NANCY G. WHITE**  
Restorer

(206) 783-9160  
By Appointment

## EPFG LIBRARY

The EPFG library resources are available to members simply for the asking! To arrange pickup, or to pick them up as a monthly meeting, contact the EPFG Librarian, Allan Lamb, CPF, Lamb Cottage Gallery, Lynnwood, (206) 776-1911.

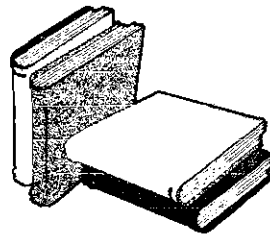
Check out the new library additions: books and videos on gilding, plus a set of basic gilding tools.

### Books:

- Framers book of techniques and materials
- Framers guide to Japanese papers
- Picture Framing - Kistler I
- Mat Cutting - Kistler II
- Needlework - Kistler III
- Business Forms
- Conservation Framing
- Easy to build object box
- Frames & framing
- PPFA GUILD: Guidelines for framing works of art on paper
- PPFA GUILD: Guidelines for framing works of art on canvas
- Mounting, lamination, and texturizing
- Matting & hinging
- Marbling
- Art of showing art
- Beginners guide to faux finishes
- Guerrilla marketing
- How to care for works of art
- How to sell framing
- Life of a photo
- The gilder's manual
- Practical gilding

### Videos:

- Traditional gilding
- Basics of matcutting/decorating
- Basics of picture framing
- Color selection in matting
- Conservation framing - Bowen
- Framing needlework
- French mats and inlaid mats
- Conservation framing needleart
- Conservation framing - Kistler
- Recognizing Graphic Art Techniques - FACTS
- Gilding Tools: gilder's pad, tip, and knife



# CLASSIFIEDS

**FOR SALE:** Fletcher 2000 60" matcutter with squaring arm and production stops, \$550; C&H 40" matcutter with squaring arm and new head, \$250. Contact Lynn, 360-652-7361.

**STORE LIQUIDATION:** art inventory, framing equipment, store fixtures, posters & L.E.'s, pneumatic chopper, display racks, display folders, 276 Cassese, easles, art bins, all cutters, track lighting, and many extras! Call for details, and describe your needs. (206) 528-2832. Paul Miller/Raindrops Gallery/Seattle, WA.

**FINALLY:** A frame shop worth buying. 1200 sq. ft store in thriving Seattle neighborhood. 60% retail sales, 40% wholesale/corporate sales. 8 year established customer base. 150K annual sales. Serious inquires only. Call voice mail 206-615-8683.

**LOOKING FOR** a full time, high energy, friendly, quality-minded framer and sales person for a personable and busy frame shop in Olympia, WA. Contact Carolyn, 360 357-3232.

## Cascade Picture Framers' Guild

Pacific Northwest Trade Show '97

When: September 21st, 1997, 10:00 a.m. - 4:00 p.m.

Where: Portland, Oregon  
Double Tree - Jantzen Beach  
909 N. Hayden Island Drive

Located at the I-5 Jantzen Beach Exit, right at the I-5 bridge across the Columbia River.

For more info call Mike Johnson, Gallery International, 503-644-9766.

# PORTICO.

Eight uniquely crafted mouldings inspired from the fresco walls of European villas and the worn, layered look of painted antique furniture.

For more information on new Portico and other Larson-Juhl framing products call:  
(800) 438-5031

or contact your Larson-Juhl sales representative by calling (800) 223-0307

Stephen Dean - ext. 454 Paul Anderson - ext. 456  
Joe Garitone - ext. 455

**LARSON · JUHL**  
ADDING ARTISTRY TO ART  
WARMTH TO LIVING



**FRAMERS' INVENTORY**  
*Specializing in the Fine Art of Service.*

## STILL GROWING!

### WOOD MOULDINGS

ARQUATI, BAY, FRAMERS' INVENTORY,  
LA MARCHE, MAX, PIEDMONT, SENELAR,  
WILLIAMSON

### METAL MOULDING

DESIGNER & NIELSON

### MATBOARD

BAINBRIGE, CRESCENT, MILLER

C&H AND FLETCHER FRAMING EQUIPMENT  
SEAL MOUNTING EQUIPMENT.

5000 S.E. 18TH AVENUE, PORTLAND, OR. 97202  
TOLL FREE # 1(800)543-2467

## HARTUNG GLASS INDUSTRIES

- ◆ Complete line of Acrylics; Clear, Non-Glare & UV.
- ◆ We carry Tru-View, Sandel & Crystalview
- ◆ Specializing in beveled mirrors for framing.
- ◆ Next day delivery from Everett to Tacoma.
- ◆ Over 20 years experience with picture framers.
- ◆ Call us and have a Customer Service Representative specializing in your needs help you.



17830 West Valley Highway, Seattle, WA 98188  
(206)656-2626, (800)552-2227, FAX (206)656-2601



# September Meeting Topic

Joanna Stearns, CPF, ISA to present  
 "Fine Art Appraisals"

The September meeting topic is Fine Art Appraisals, by Joanna Stearns, CPF, ISA of J Stearns Associates, Edmonds WA.

Joanna is a picture framer and recently (May '97) completed the PFFA CPF recertification course.

Hartung Glass is hosting the meeting on September 9th at their facility. Plan to arrive a 7:00 p.m. for the social event and plant tour. The meeting starts at 7:30.

Hartung Glass is located at 17830 West Valley Hwy., Tukwila. Call 206-656-2626 for directions.

## Evergreen Picture Framers Guild

### Officers and Board of Directors

**President**

Frank Larson, CPF  
 Larson Fine Art Services  
 425.482.0549

John Ferens, CPF  
 Ferensoft  
 206.282.1775

**Vice President**

Jeff Schuffman  
 Jeffery Schuffman & Assoc.  
 206.223.1810

Alan Lamb, CPF  
 Lamb Cottage Gallery  
 206.776.1911

**Treasurer**

Paul Knoop, CPF  
 The Frame Makers  
 253.564.2320  
 prknoop@wport.com

Steve Dean  
 Larson-Juhl  
 206.433.6002

**Secretary**

Donna Rickman, CPF  
 Finishing Touches  
 425.338.0932

Joe Huber  
 Studio Moulding  
 206.656.2940

**Past President**

Paul Miller, CPF  
 Raindrops Gallery  
 206.528.2832

**Newsletter Coordinator**

Tim Taricco  
 myframeshop.com  
 Network  
 425.827.6951  
 timtaricco@rocketmail.com

**NURRE CAXTON**  
 FRAMES OF DISTINCTION



*"We're Obsessed  
 With Customer  
 Satisfaction"*

**Pamela Neal**  
 Sales Representative for  
 Washington, Wyoming, Montana  
 Oregon and Idaho

1-800-255-1942, press 6, ext. 4011  
 for voice mail  
 1-800-377-3300 fax  
 1-800-910-8966 pager

We promise friendly, reliable service,  
 same day chop service, free UPS  
 for orders of 3 chops or more  
 (wood and Nielsen metal combined)



Wholesale Picture Frame Supplies      2928 4th Ave S • Seattle, WA 98134  
 206-292-9664  
 800-423-6287



695 Edgewater St. N.W.  
 Salem, Oregon 97304  
 Phone: 1-800-872-4445  
 FAX: 1-503-363-7273

21828 87th Ave. S.E., Suite B  
 Woodinville, WA 98072  
 Phone: 1-800-292-3202  
 FAX: 1-206-486-4978

# 1997 Calendar of Events

**September 9** 7:00 p.m. social and tour  
7:30 p.m. meeting  
*Location:* Hartung Glass, 17830 West Valley Hwy.,  
Tukwila, WA 206-656-2626  
*Topic:* Fine Art Appraisals

**September 23** 6:30 PM  
*Location:* TBA  
*Board Meeting:* Everyone is invited, bring your efforts and ideas

**October 14** 7:30 p.m.  
*Location:* TBA  
*Topic:* Color Trends for 1998

**November 12** 7:30 p.m.  
*Location:* TBA  
*Topic:* Holiday Tricks & Treats

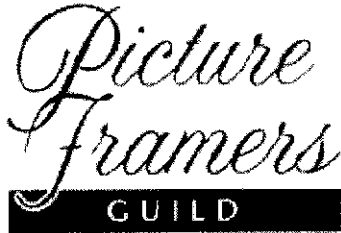
**November 25** 6:30 p.m.  
*Location:* TBA  
*Board Meeting:* Everyone is invited, bring your efforts and ideas

*The latest event information can be found at [www.myframeshop.com/epfg/homepage.htm](http://www.myframeshop.com/epfg/homepage.htm)*



c/o Paul Knoop, CPF, Treasurer  
6724 W. 19th Street  
University Place, WA 98466-5527





If you are a member of EPFG, you are listed on our new Web site. Please fill out this form and return it to us so we can make sure all your information on the Web site is correct.

If you are not a member of EPFG and would like to be listed on our Web site, join EPFG today! Send a check for \$40 payable to EPFG along with this form. Your \$40 gives you a one year membership in EPFG.

**Return this form to:**

Tim Taricco  
 10640 NE 29th St., #70  
 Bellevue, WA 98004  
 425.827.6951  
 taricco@myframeshop.com

## WEB SITE INFORMATION FORM

*Please Print*

Company Name:

Contact Name: (optional)

Street Address:

City:

State:

Zip:

Phone: (include area code)

Fax: (include area code)

E-mail:

Web Site:

Along with your company name and contact information, you receive 60 spaces of text to describe your business. Please fill out your company description using the spaces below. One letter per square.


**Our Web site-** <http://www.myframeshop.com/epfg>